



STAINLESS STEEL TOP GRADE PANEL SUPPLIER

FOSHAN MELLOW STAINLESS STEEL CO., LTD.

Foshan Mellow Stainless Steel Co., Ltd.

Web: www.mellowstainless.com www.mellowsteel.com
Tel: +86-131 3822 6177 Email: marketing@mellowsteel.com

Factory Address: Baoying Rd, Sihui, Zhaoqing, Guangdong Province,
China, 528146

Export Office address: Unit 4001, Building 4, Xinbao Plaza, No. 46,
Tianhong Road, Foshan New Town, Lecong Town, Foshan,
Guangdong, China

COMPANY PROFILE

Founded in 2004, Mellow Group have been thoroughly developed in the stainless steel market for more than 18 years with advanced technology.

As a leading stainless steel enterprise specialized in stainless steel coils and customized surface stainless steel material in China, Mellow group have total employees more than 600 people. The annual capacity reaches 1.5 million tons and annual revenue exceeds 2.5 billion US Dollars.

Mellow Group are integrating all resources from 201/304/430 stainless steel coils and sheets with NO.1/2B/BA/NO.4/HL/8K/Embossed/Etched in various colors surfaces to high-end custom stainless steel home furniture and other stainless steel fabrication.

Our factory have ISO9001 and ISO4001 Certificate and Verified by SGS, We have advanced equipment support, experienced workers, strict quality control system, high efficiency sales team and competitive prices, which attract customers from all over the world.



Production Base



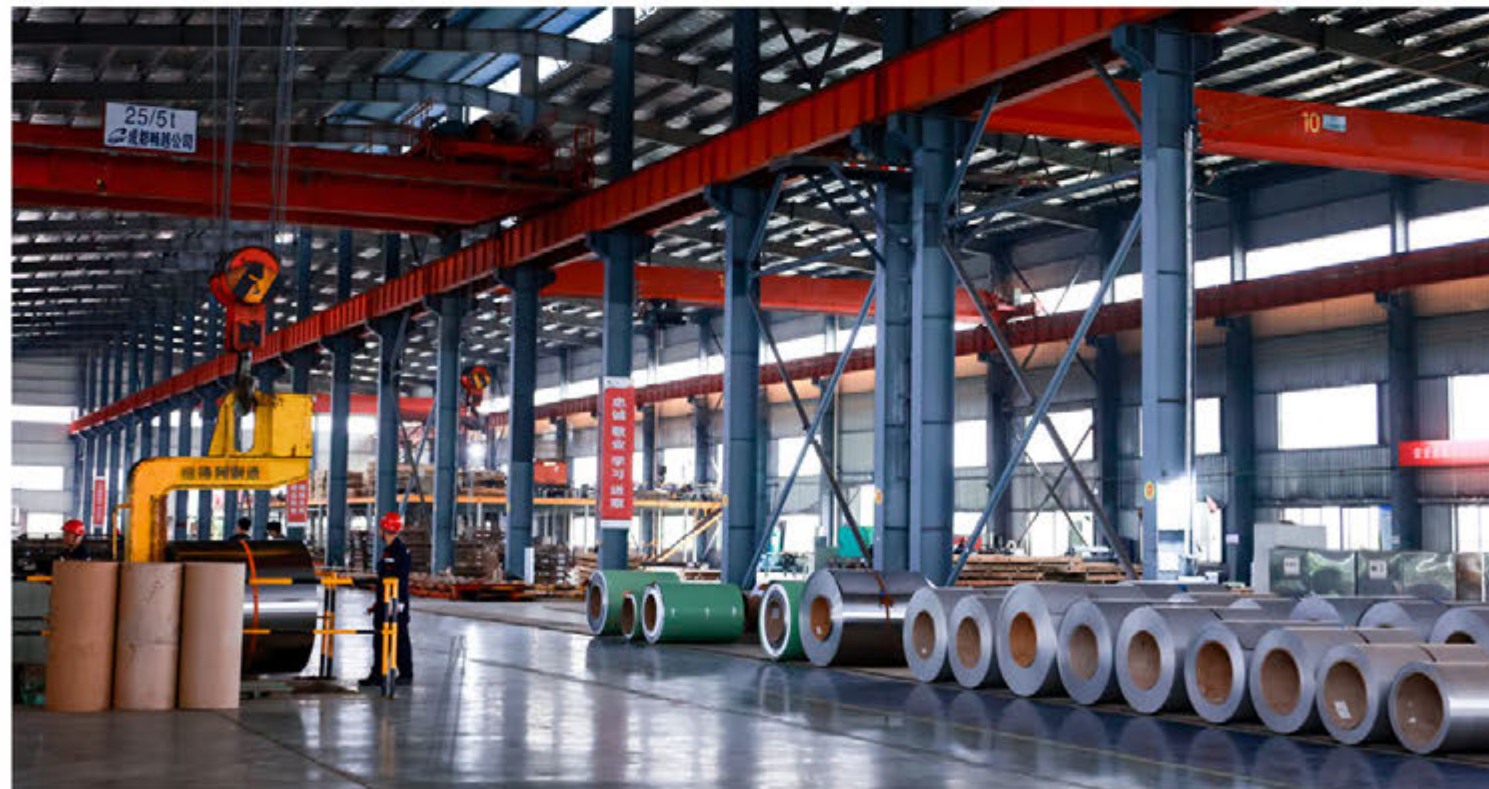
Stainless Steel Sheet



Stainless Steel Coils



Stainless Steel Coils



Finish BA, NO.4, HL, SB, 8K and gold color can be in coils.
Thickness 0.3-3.0mm, Width 20-1240mm, Grade: 201/304/430/316



With our effective integration of production-supply-marketing resources, we would always provide you high quality products at competitive prices, prompt delivery, and best services. With steady development for these years.

our products are exported all over the world and mainly in Middle East, South-east Asia, South America, Russia and Korea, etc and get a high reputation from both at home and abroad.



Office Environment



Office Environment



Warehouse Export Wooden Packing

OUR EQUIPMENT



Cutting And Slitting Machines



Mirror Polish Machine



Etching Line



Etching Model



Physical Vapor Deposition (PVD) Machines



12 Titanium Chemical Plating (LIC) Production Lines

EXHIBITIONS & EVENTS



VERIFIED BY SGS ISO9001

Alibaba.com Gold Plus Supplier

Verified

Assessment Report

Presented to

Foshan Mellow Stainless Steel Co., Ltd.

佛山市美利航进出口有限公司

Gold Supplier & Assessed Company Relationship:	<input checked="" type="checkbox"/> Self-owned <input type="checkbox"/> Wholly Owned <input type="checkbox"/> Shareholder/Partner <input type="checkbox"/> Cooperation Partner <input type="checkbox"/> Same Corporation
Company Address	Unit 4001, Building 4, Xinbao Plaza, No. 46, Tianhong Road, Foshan New Town, Lecong Town, Foshan City, Guangdong Province, China
City / Country:	Foshan / China
Consigner of Assessment:	Alibaba
Gold Supplier Member ID:	mellihg
Gold Supplier Company Name:	Foshan Mellow Stainless Steel Co., Ltd.
Contact Person:	Ms. Jane Qu
Phone Number:	0086-13138226177
Fax Number:	0086-757-83317399
Email:	marketing_jane@mellowsteel.com
Website Address (URL):	http://fsmellow.en.alibaba.com



认证证书

证书号: USA2004

兹证明

肇庆市森美金属有限公司

统一社会信用代码: 91441200794629326

注册地址: 肇庆高新区正雅一路8号
生产办公地址: 广东省肇庆市高新区正雅一路8号

质量管理体系符合标准

ISO 9001:2015

适用范围

不锈钢板材(卷板)的一般机械加工及销售

初次发证日期: 2015年02月20日
证书颁发日期: 2015年11月04日
证书换发日期: 2015年11月04日
证书有效期至: 2018年02月20日
1-发证依据: GB/T 19001-2015/ISO 9001:2015
0421990904 2015年02月20日-2018

签发: 美凌苗



北京东方博信认证中心有限公司



Service Provided by SGS
Report No.: 22888168_T



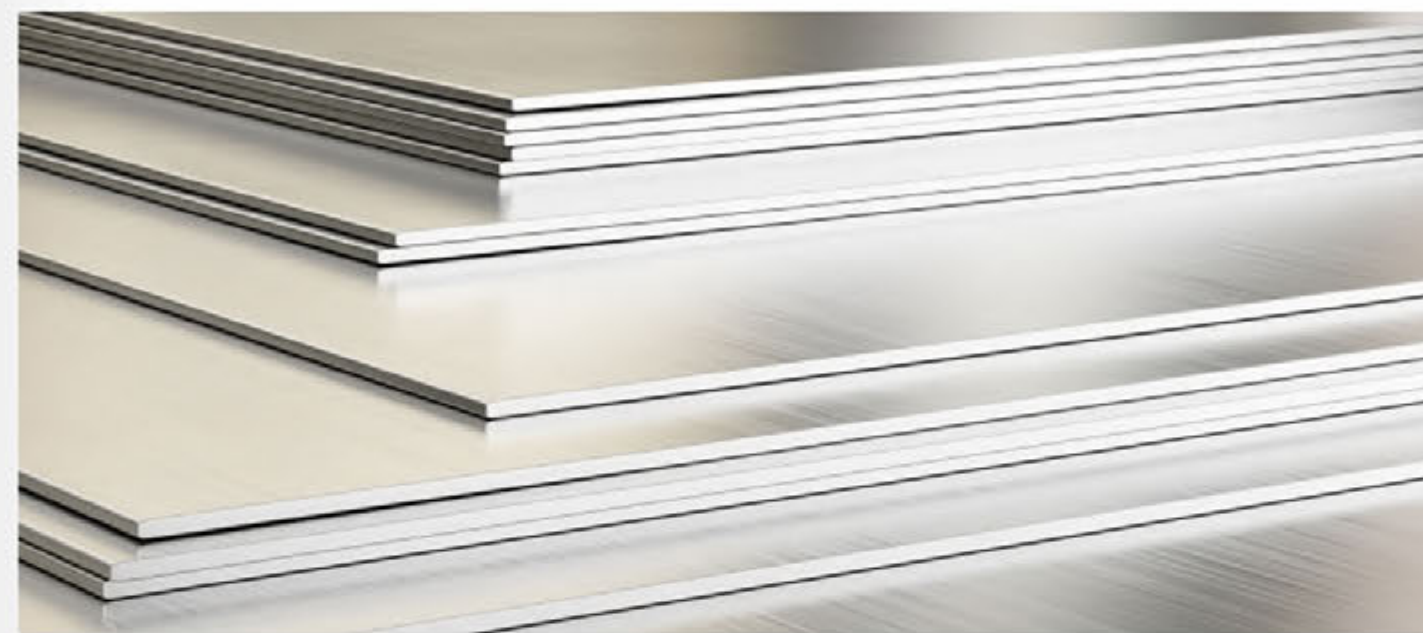
>150000MT YEARLY EXPORTS WORLDWIDE

STAINLESS STEEL COILS



Item	Stainless Steel Coils
Supply Condition	Hot Rolled (HR) & Cold Rolled (CR)
Finishes	N1 (HR), 2B, BA, HairLine, 8K, N4, SB
Grades (AISI)	304/304L, 316L, 430,410, 201 (J1/J2/J3/J4/J5)
Thickness	3.00-14.00MM (HR) / 0.3-3.0(CR)
Width	Upto 1500MM
Length	Coil
Weight	Upto 2.5MT/Pallet

STAINLESS STEEL SHEETS | PLATES



Item	Stainless Steel Sheets & Plates
Supply Condition	Hot Rolled (HR) & Cold Rolled (CR)
Finishes	N1 (HR), 2B, BA, HairLine, 8K, N4, SB
Grades (AISI)	304/304L, 316L, 430, 410, 201 (J1/J2/J3/J4/J5)
Thickness	3.0-14MM (HR), 0.3-3.0 (CR)
Width	Upto 1500MM
Length	Custom
Weight	Upto 2.5MT/Pallet

>150000MT YEARLY EXPORTS WORLDWIDE

THE SUBSIDIARIES OF MELLOW GROUP



Zhaoqing Senmei Metal Material Co., Ltd
Specialized in manufacturing decorative stainless steel sheet



Wuxi Tianhong Stainless Steel Co., Ltd
Specialized in stainless steel material processing and trading

THE SUBSIDIARIES OF MELLOW GROUP



Hunan Tianhong Materials Co., Ltd
Specialized in stainless steel material processing and trading



Foshan Lisheng Stainless Steel Co.,Ltd
Specialized in stainless steel material processing

MIRROR PLATE

Material: SUS304 SUS316 SUS201 SUS430
 Thickness: 0.3mm-3.0mm
 Max Width: 1524mm
 Max Length: 6000mm



A01 8K/Mirror



A02 Champagne Gold



A03 Sapphire Blue



A04 Titanium



A05 Rose Red

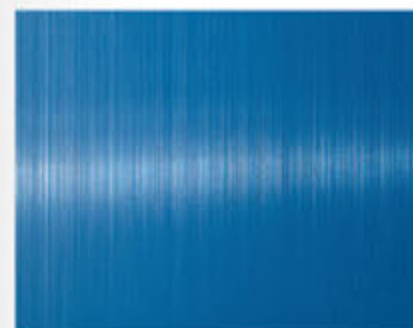


A06 Wine Red



Material: SUS304 SUS316 SUS201 SUS430
 Thickness: 0.3mm-3.0mm
 Max Width: 1524mm
 Max Length: 6000mm

HAIRLINE / BRUSHED PLATE



B01 Hairline Sapphire Blue



B02 Hairline Bronze



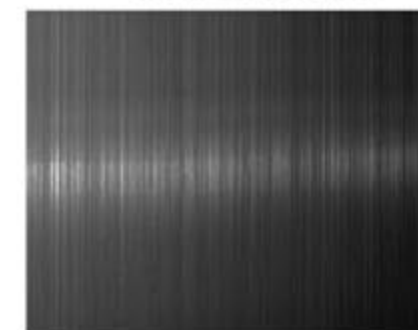
B03 Hairline Jade Green



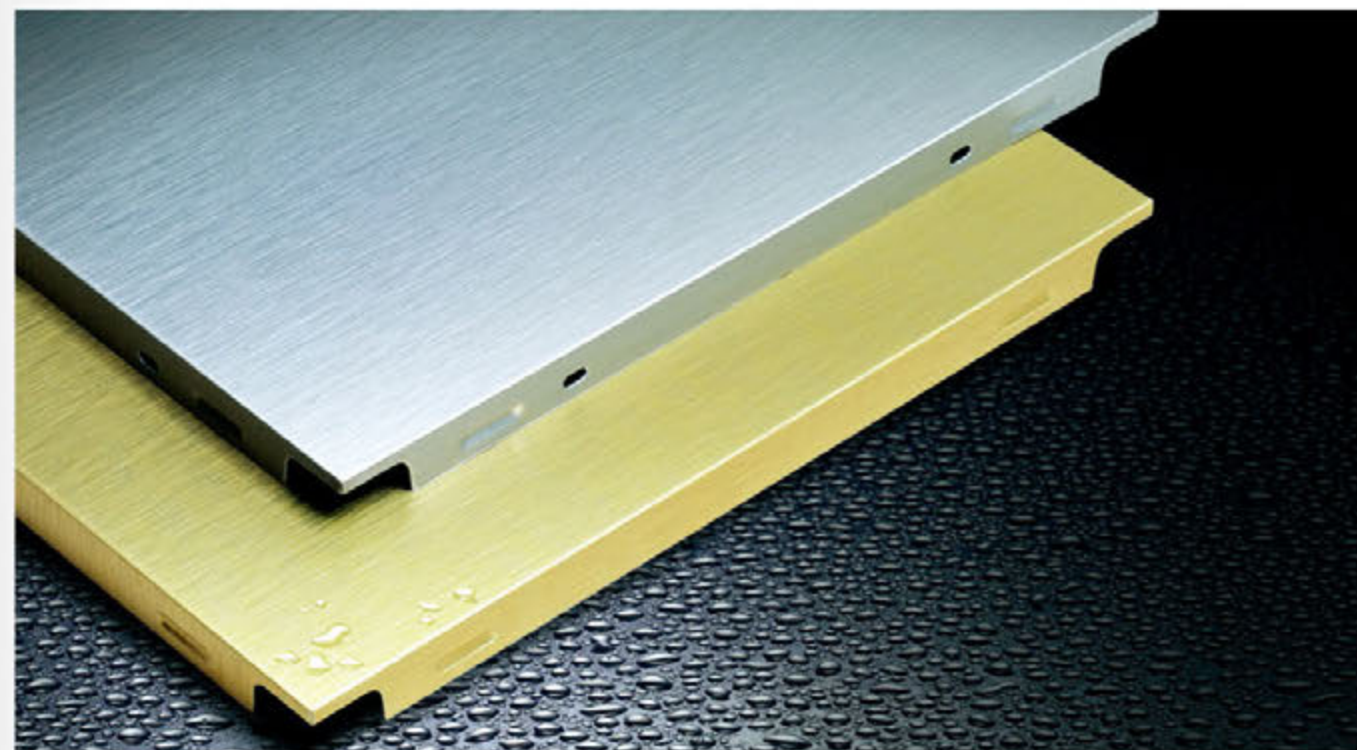
B04 Hairline Violet



B05 Hairline Pink



B06 Hairline Black Titanium



IRREGULAR VIBRATION PLATE

Material: SUS304 SUS316 SUS201 SUS430
 Surface: BA 2B Mirror and Any Colors
 Thickness: 0.3mm-3.0mm
 Max Width: 1219mm
 Max Length: 6000mm



C01 Irregular Vibration Champagne



C02 Irregular Vibration Antique Brass



C03 Irregular Vibration Green



C04 Irregular Vibration Blue



C05 Irregular Vibration Violet



C06 Irregular Vibration Black Titanium



Material: SUS304 SUS316 SUS201 SUS430
 Surface: BA 2B Mirror and Any Colors
 Thickness: 0.3mm-3.0mm
 Max Width: 1500mm
 Max Length: 6000mm

SANDBLASTED PLATE



D01 Sandblasted



D02 Sandblasted Titanium



D03 Sandblasted Rose Gold



D04 Sandblasted Blue



D05 Sandblasted Green

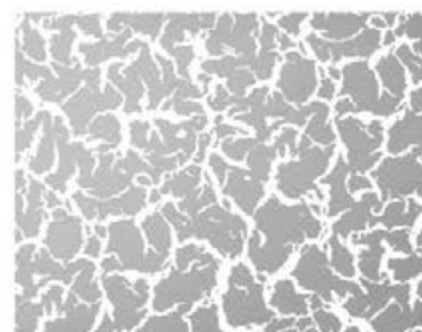


D06 Sandblasted Violet

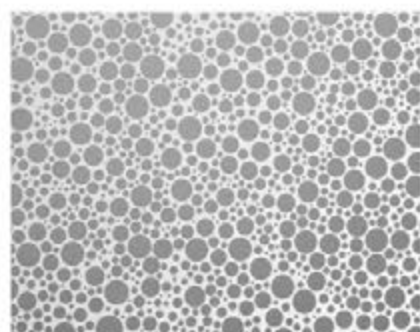


ETCHED PLATE

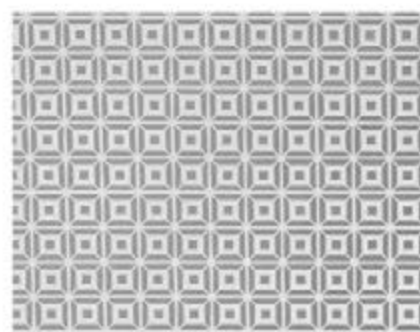
Material: SUS304 SUS316 SUS201
 Surface: BA Hairline Brush Mirror and Any Colors Coated
 Thickness: 0.3mm-3.0mm
 Max Width: 1240mm
 Max Length: 4000mm



E01



E02



E03



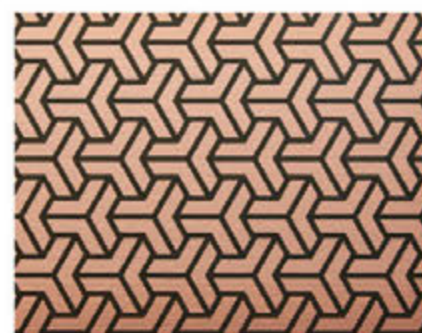
E04



E05



E06



E07



E08



E09



E10



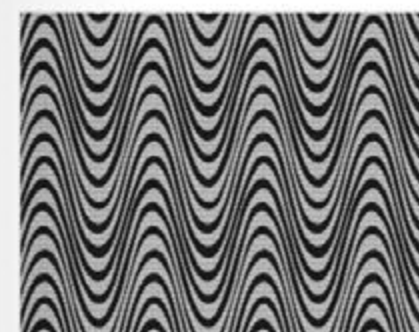
E11



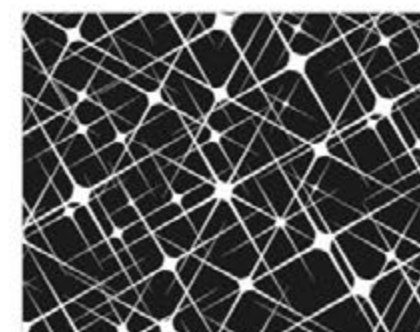
E12

Material: SUS304 SUS316 SUS201
 Surface: BA Hairline Brush Mirror and Any Colors Coated
 Thickness: 0.3mm-3.0mm
 Max Width: 1240mm
 Max Length: 4000mm

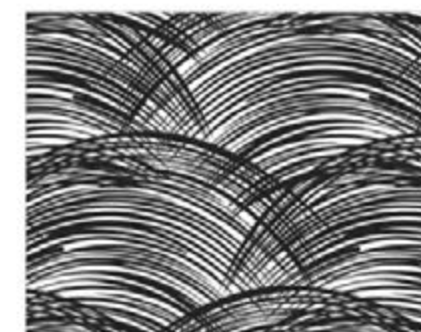
ETCHED PLATE



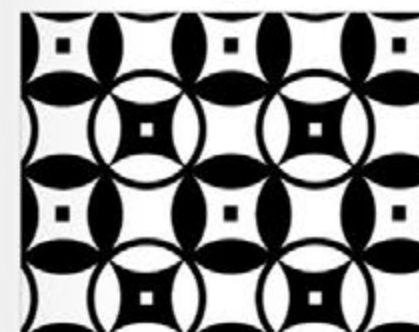
E13



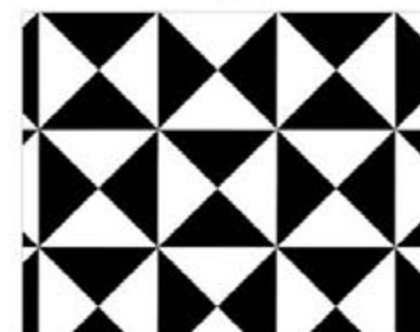
E14



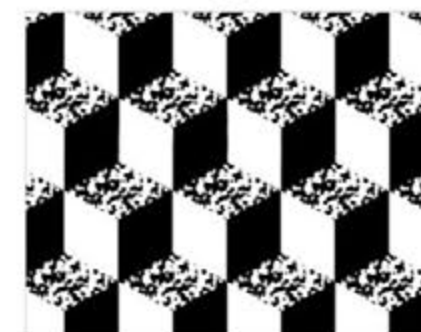
E15



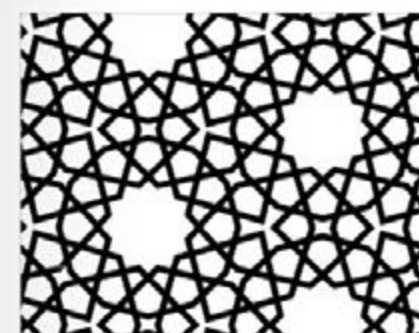
E16



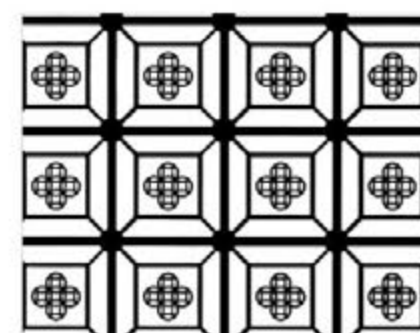
E17



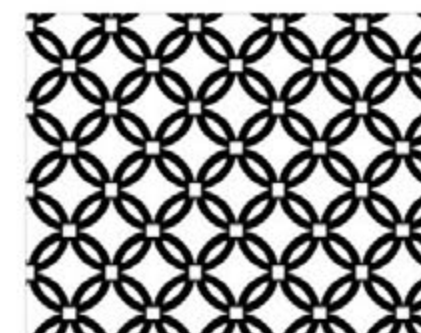
E18



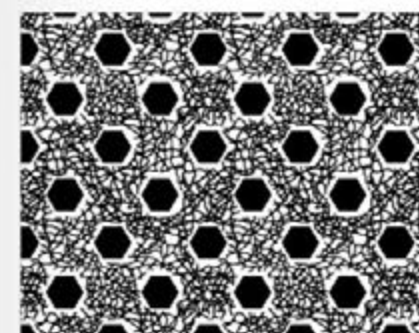
E19



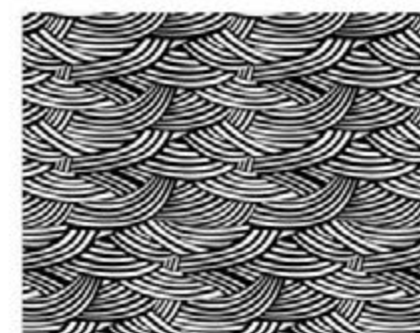
E20



E21



E22



E23



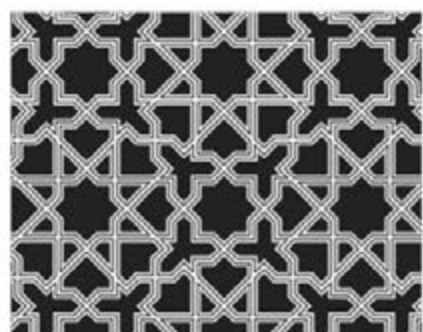
E24

ETCHED PLATE

Material: SUS304 SUS316 SUS201 SUS430
 Surface: BA Hairline Brush Mirror and Any Colors Coated
 Thickness: 0.3mm-3.0mm
 Max Width: 1240mm
 Max Length: 6000mm



E25



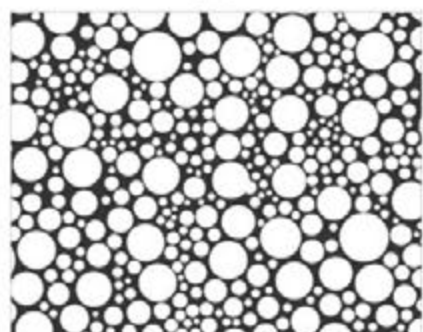
E26



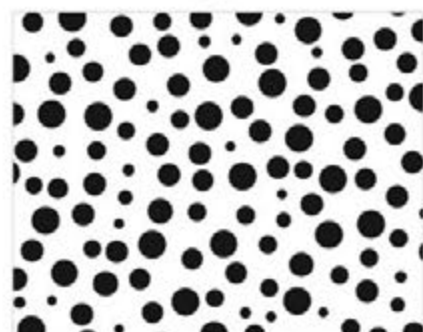
E27



E28



E29



E30



E31



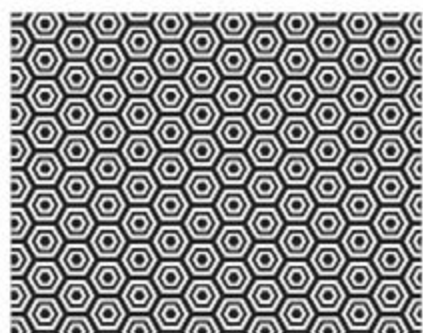
E32



E33



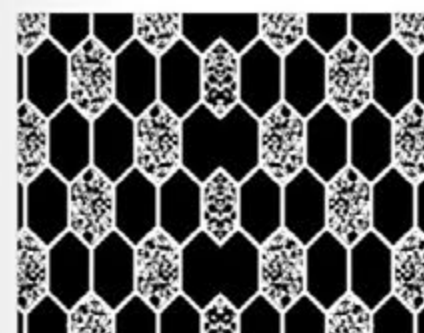
E34



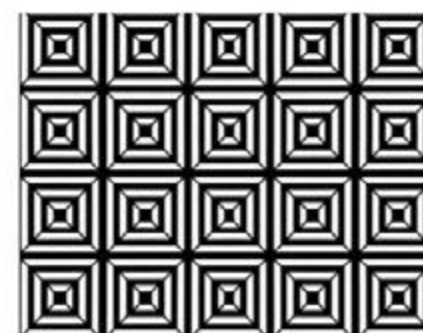
E35



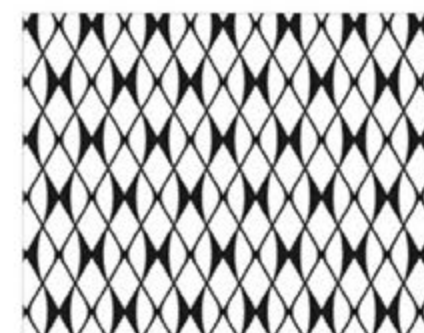
E36



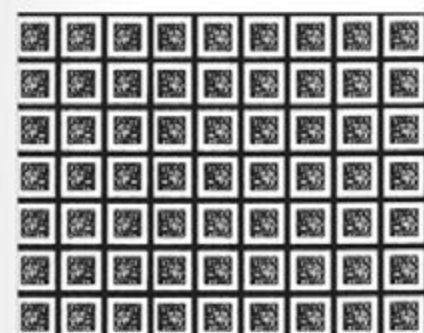
E37



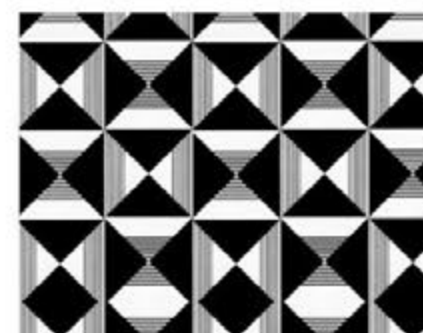
E38



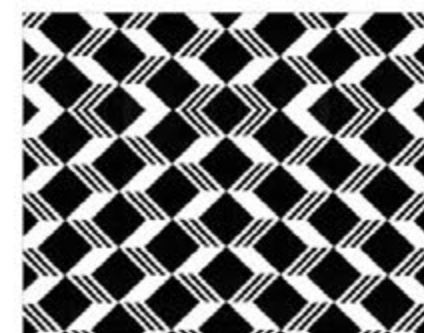
E39



E40



E41

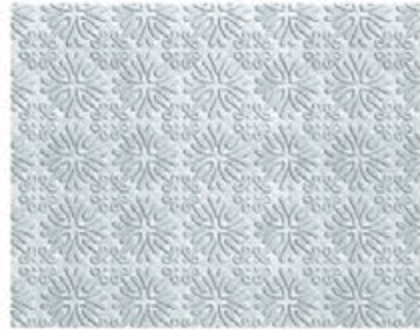


E42

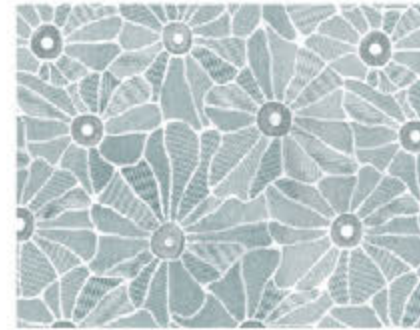
ENBOSSED PLATE



F01 Little Panda



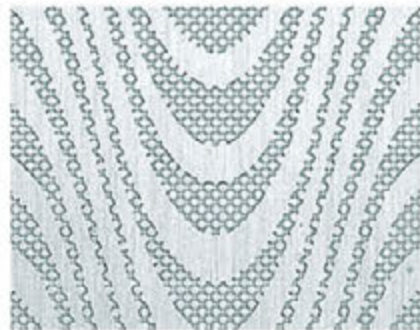
F02 CFrysantFemum



F03 Butterfly Love Flower



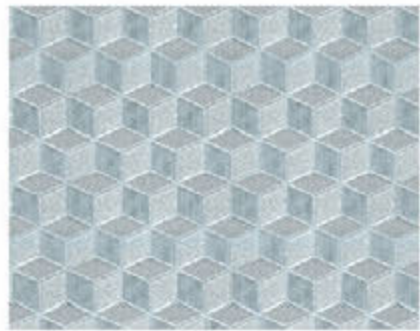
F04 Ice Bamboo



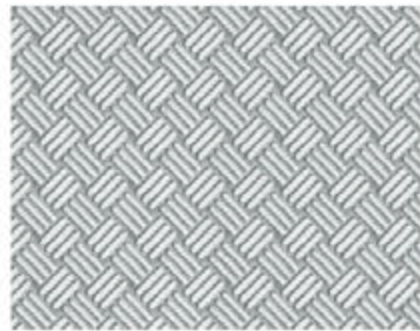
F05 Water Pattern



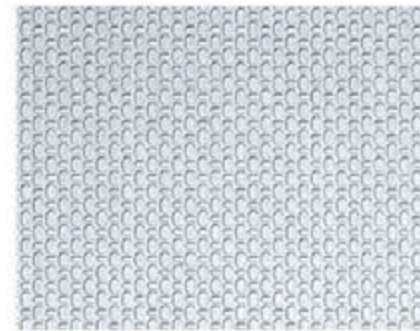
F06 Bamboo Weave



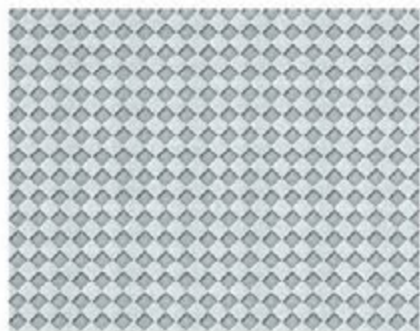
F07 Cube



F08 Twill



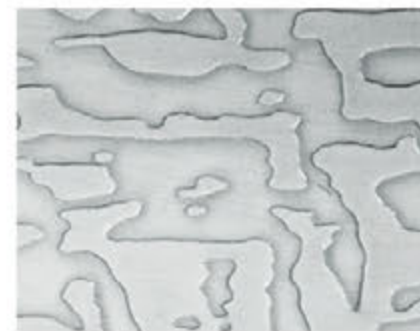
F09 Pearlescent Rice



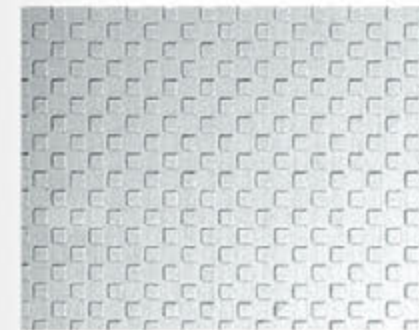
F10 Diamond



F11 Large Square



F12 Free Pattern



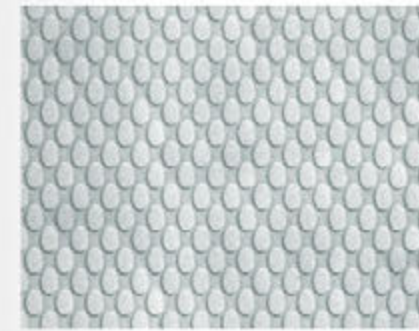
F13 Small Square



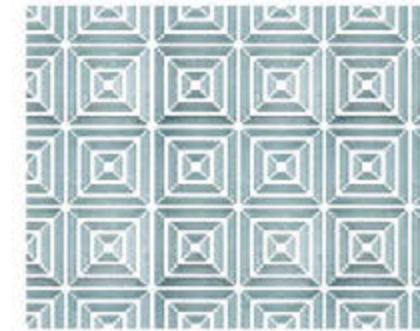
F14 Feart



F15 Ingots



F16 Egg Type



F17 Return Type

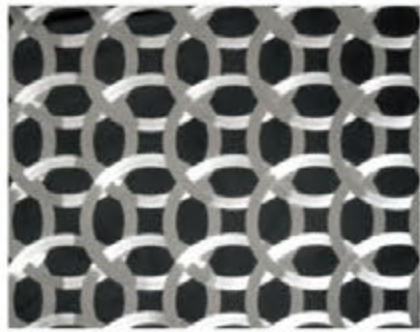


F18 Stone Pattern

LASER PLATE



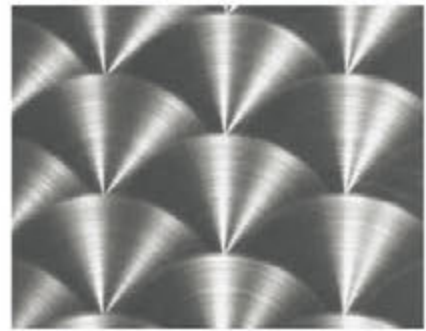
G01



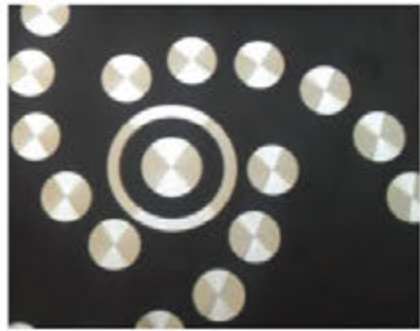
G02



G03



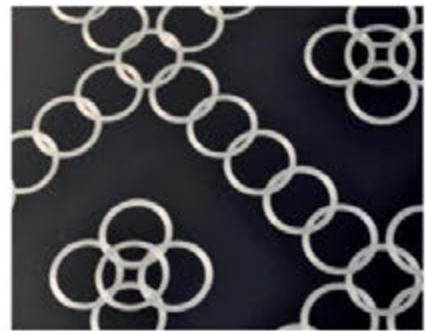
G04



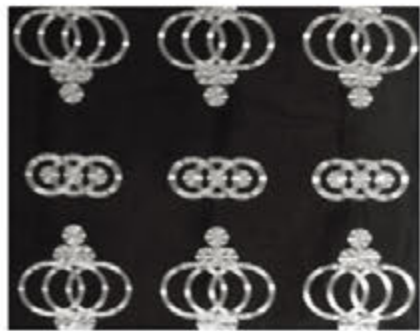
G05



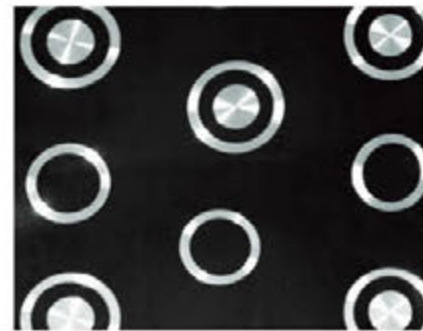
G06



G07



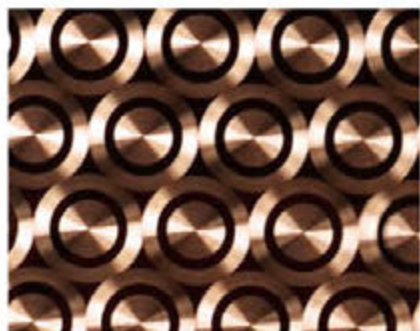
G08



G09



G10



G11



G12

COLOR PATTERN PLATE



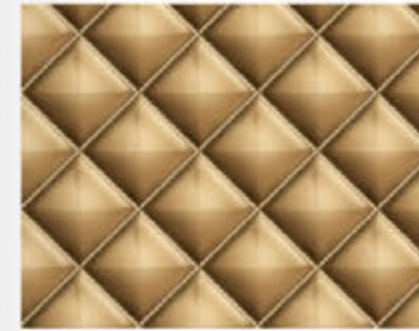
H13



H14



H15



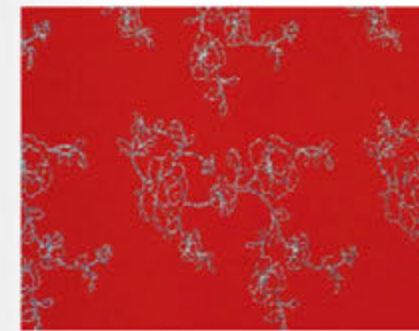
H16



H17



H18



H19



H20



H21

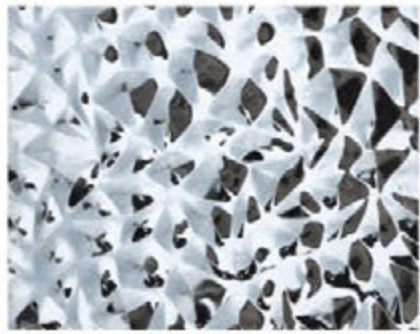


STAMPED PLATE

STAMPED PLATE



J01



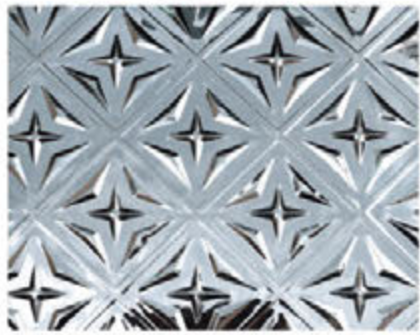
J02



J03



J04



J05



J06



J07



J08



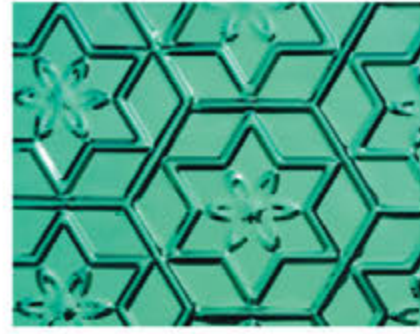
J09



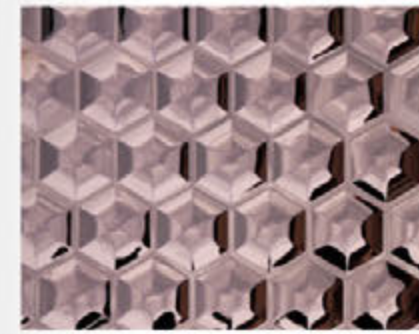
J10



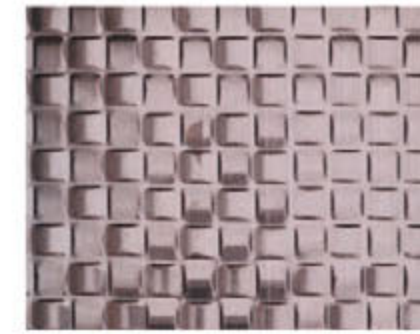
J11



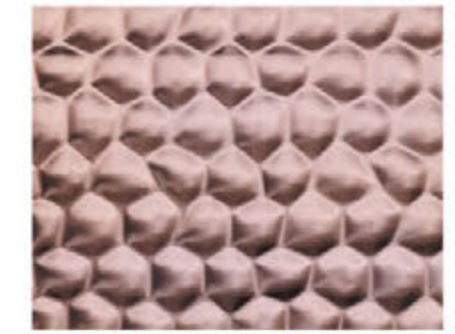
J12



J13



J14



J15



J16



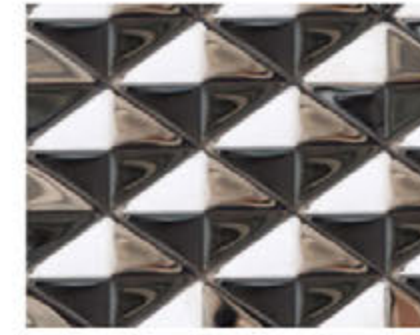
J17



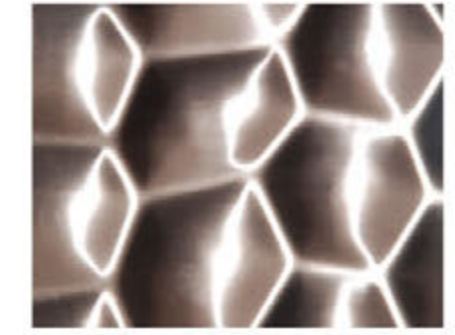
J18



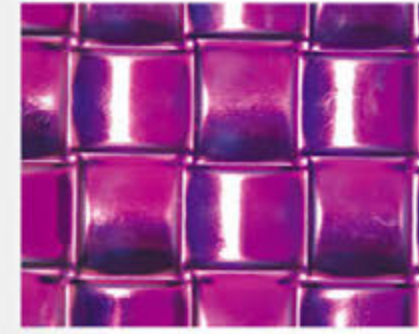
J19



J20



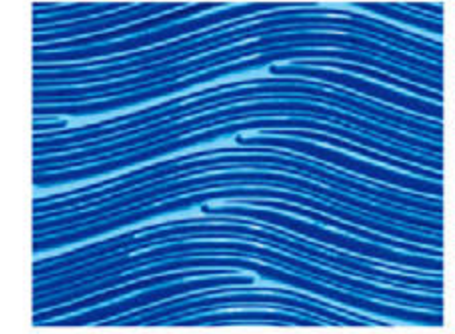
J21



J22



J23



J24

ELEVATOR PLATE



K01
Mirror, Etching



K02
Mirror, Etching



K03
Mirror, Etching, Hairline



K04
Mirror, Etching, Hairline



K05
Mirror, Etching, Hairline



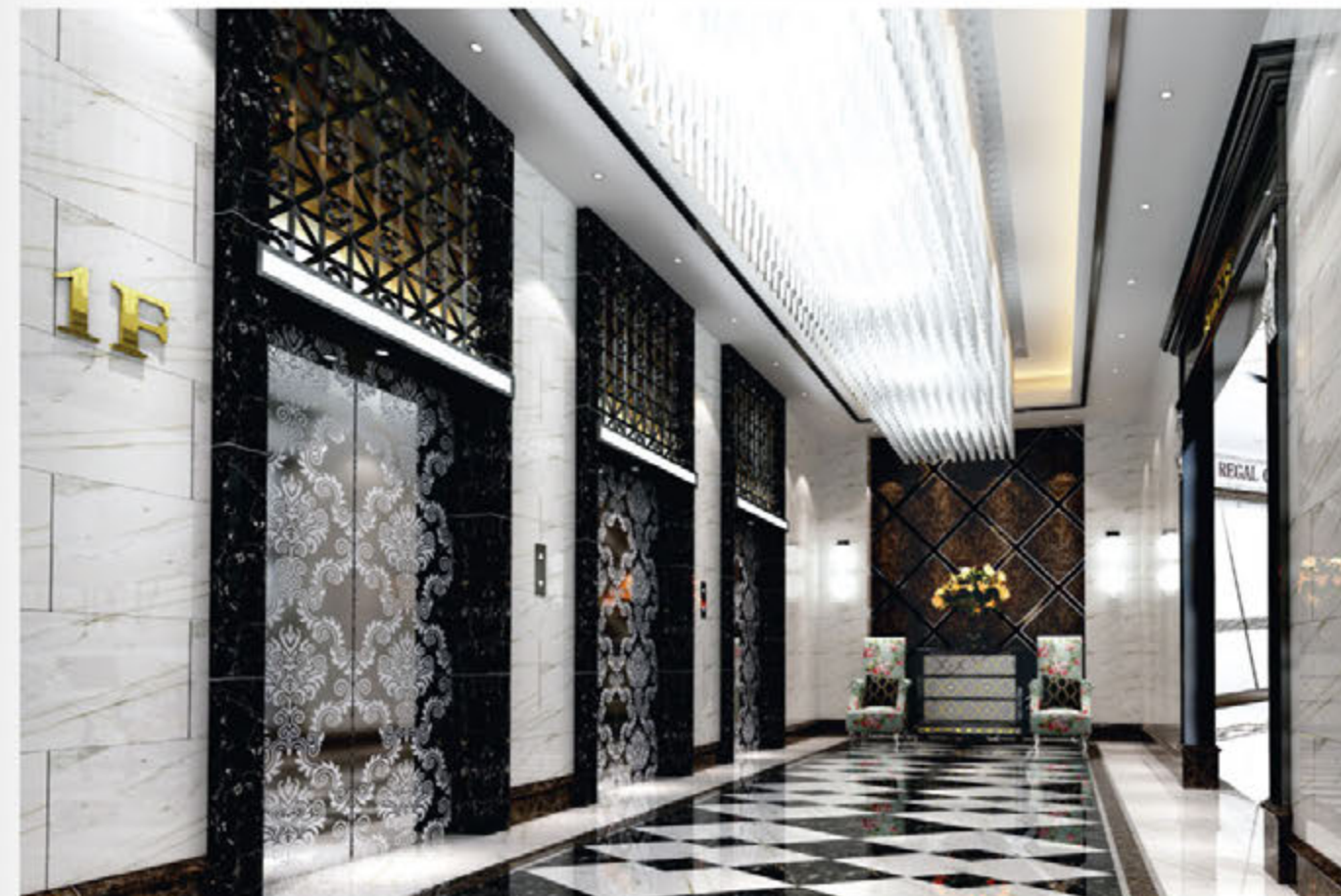
K06
Mirror, Etching, Hairline



K07
Mirror, Etching, Vibration, Hairline



K08
Mirror, Etching, Hairline



MBT-K09
Mirror, Etching, Vibration, Hairline



MBT-K10
Mirror, Etch, Hairline, Vibration, Recessed Gold



MBT-K11
Mirror, Etch, Recessed Gold



MBT-K12
Mirror, etching, titanium

SCREEN SERIES



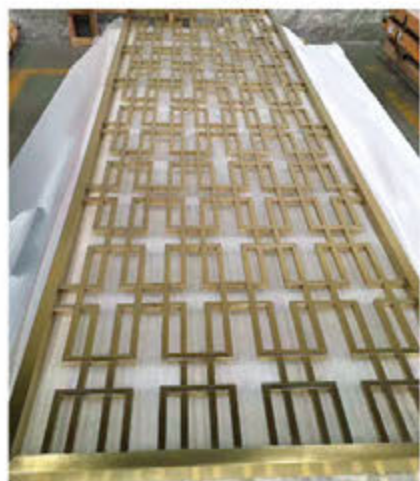
L01



L02



L03



L04



L05



L06



L07



L08



L09

